

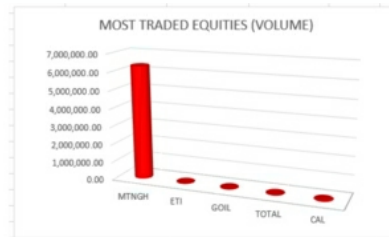


**DAILY INTERMARKETS SNAPSHOT**

16-03-2021

**STOCK MARKET SUMMARY**

STOCK MARKET SUMMARY				
ITEM	UNIT	PREVIOUS	CURRENT	%GHN
VOLUME	QTY	10,811.00	6,327,714.00	58430.330%
VALUE	GHC	24,480.59	5,384,520.85	21895.062%
GSE-CI INDEX	POINT	2,214.90	2,226.75	0.5350%
GSE-FS INDEX	POINT	1,856.06	1,856.06	0.0000%
MARKET CAP.	GHC	57,133.07	57,257.10	0.2171%
YTD	PERCENT	14.08%	14.69%	4.3324%
PRICE CHANGES				
MTNGH	GHC	0.84	0.85	1.19%
TOTAL	GHC	3.10	3.11	0.32%



Today's trading session ended with a 11.85 points increased in the Ghana Stock Exchange's Composite Index (GSE-CI). The market capitalization also increased by GH¢124.03 to GH¢ 57,257.10. The year-to-date return is recorded at 14.69% .

A total volume of 6,327,714 shares valued at GH¢5,384,520.85 exchanged hands on the bourse. The most traded equity for today was MTNGH whose trade accounted for 99.81% of the total shares traded and 99.70% of the total value of shares traded..

There were two price changes as the market recorded two gainers for today. MTNGH was the day biggest gainer as the stock price appreciated by 1.19% to close the market at GHS 0.85per share

GSE LISTED COMPANIES TRADING STATISTICS AS AT 16TH MARCH 2021											
EQUITY	MARKET CAP(GHS million)	CLOSING PRICE(GHS)	YTD RETURNS (%)	DIV YIELD(%)	ROE(%)	P/E(x)	P/B(x)	FIGURE \$ BASED	GSE YEAR	GSE RETURN	
ACCESS	747.97	4.39	(2.05)	0.0000	5.75	2.39	0.14	Q3'20	1990	0.00	
ADB	1,165.47	9.84	-	0.0000	1.76	12.35	0.23	Q3'20	1991	-7.95	
AGA	15,153.30	37.89	-	0.3311	NA	NA	0	1992	-2.43		
ALV	23.67	6.16	(9.03)	0.0000	(15.63)	(0.68)	0.11	Q3'20	1993	10.74	
AYRTN	86.00	6.40	400.00	0.0000	(64.28)	(2.38)	1.92	Q2'19	1994	124.24	
BOPP	63.60	2.80	-	1.7000	19.25	3.39	0.65	Q3'20	1995	6.33	
CAL	463.34	6.75	(15.73)	6.4000	2.70	2.30	0.06	Q3'20	1996	12.82	
CLYD	1.02	6.82	-	0.0000	0.84	0.03	0.00	Q2'20	1997	41.85	
CMLT	0.75	6.11	22.22	3.3031	0.18	0.03	0.00	Q3'20	1998	14.64	
CPC	61.14	6.03	50.00	0.0000	NA	NA	NA	0	1999	-18.22	
EGH	2,322.37	7.28	-	0.0000	3.33	4.06	0.16	Q3'20	2000	16.55	
EGI	220.41	1.42	143	3.1630	3.64	1.35	0.13	Q3'20	2001	11.42	
ETI	1,684.74	6.87	(12.50)	0.0000	1.02	1.20	0.01	Q2'20	2002	45.96	
FML	125.50	1.80	-	0.0000	(0.34)	(34.80)	0.33	Q3'20	2003	184.47	
GCB	1,132.50	4.50	11.1	6.6667	2.31	2.85	0.08	Q3'20	2004	91.32	
GGBL	276.84	6.80	-	3.3000	2.27	16.12	0.37	Q3'20	2005	-29.85	
GOIL	587.79	1.50	-	2.8000	27.24	5.08	1.38	Q3'20	2006	4.97	
GSP	433.43	5.80	-	0.0000	NA	NA	NA	0	2007	31.84	
MAC	53.49	5.80	-	0.0000	3.38	10.68	0.43	Q3'20	2008	51.04	
NLC	4.51	6.89	-	0.0000	(45.24)	(0.76)	0.34	Q2'20	2009	-48.58	
MTNGH	10,446.30	6.95	32.81	5.8824	23.31	6.61	1.54	Q3'20	2010	32.25	
PEC	14.40	6.03	-	0.0000	(46.81)	(0.40)	0.19	Q3'16	2011	-3.10	
PZC	63.84	6.38	-	0.0000	(0.31)	(35.57)	0.87	Q2'19	2012	23.81	
RBGH	304.83	6.49	3.76	0.0000	8.39	6.25	0.52	Q2'20	2013	78.81	
SCB	2,445.87	19.19	11.28	5.7500	36.15	4.74	1.71	Q3'20	2014	5.40	
SIC	15.65	6.88	-	0.0000	0.51	6.17	0.03	Q2'20	2015	-11.73	
SPL	5.20	6.82	-	0.0000	6.40	4.13	0.35	Q3'19	2016	-15.33	
SOGEGH	375.43	6.75	17.19	5.7333	2.75	2.68	0.07	Q3'20	2017	52.72	
SwL	1.09	6.05	-	0.0000	133.28	(0.86)	(1.20)	FY'19	2018	-0.29	
TBL	68.00	6.34	-	0.0000	NA	NA	NA	0	2019	-6.90	
TOTAL	347.33	3.11	9.83	2.4635	19.56	3.32	0.42	Q3'20	2020	N/A	
TLV	10,262.36	7.47	(31.33)	0.0000	NA	NA	NA	0	2021	N/A	
UNIL	516.13	6.29	-	9.6502	(4.81)	(26.83)	1.23	Q3'20	2022	N/A	

SOURCE: GSE, CDH SECURITIES LTD AND CDH RESEARCH

P/E : PRICE-TO-EARNINGS RATIO      DIV YIELD : DIVIDEND YIELD  
 ROE : RETURN ON EQUITY      YTD : YEAR-TO-DATE  
 D/P : PRICE TO BOOK RATIO

DIVIDEND ANNOUNCEMENTS					
COMPANY	SYMBOL	YEAR	DIVIDEND/SHARE (GHC)	EX DIVIDEND DATE	PAYMENT DATE

## FIXED INCOME MARKET SUMMARY

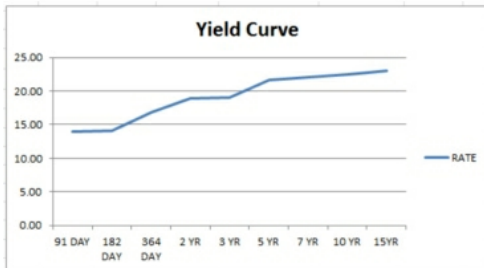
GHANA FIXED INCOME DAILY MARKET SNAPSHOT AS AT 15-03-2021			
VOLUME OF TRADES(GHS)			
ITEMS	PREVIOUS	CURRENT	% CHNG
BILLS	32,929,602.37	26,440,584.89	-19.71%
NOTES	150,405,926.39	192,012,993.91	27.66%
BONDS	623,344,757.45	746,182,641.41	19.71%
<b>TOTAL</b>	<b>806,680,286.21</b>	<b>964,636,220.21</b>	<b>19.58%</b>

TOP FIVE(5) TRADED SECURITIES			
No.	SECURITY ID	VOLUME (%)	PRICE (%)
1	28/09/23 3YR BOND	17.28%	102.59
2	06/02/23 5YR BOND	15.38%	98.70
3	17/04/23 3YR BOND	12.09%	102.39
4	15/03/32 15YR BOND	11.33%	100.76
5	03/10/22 2YR BOND	9.33%	101.74

COMPARABLE RATES		
INSTRUMENT	CURRENT RATE	RETURNS
91 DAY BILL	13.0488%	13.0488%
182 DAY BILL	13.8633%	13.8633%
364 DAY BILL	16.7571%	16.7571%
FIXED DEPOSIT 91-DAY RATE	11.2500%	11.2500%
FIXED DEPOSIT 182-DAY RATE	12.7500%	12.7500%
FIXED DEPOSIT 364-DAY RATE	14.7500%	14.7500%

### Comments



Trading as at 15th March 2021 saw the market experienced an increased in turnover by 19.58% as it recorded over GHS 964 million worth of bonds, notes and bills traded. The long term dated instruments dominated the trading activities as compared to the short and the medium term securities as trades in bonds accounted for 77.35% of total trades while that of bills and notes were 2.74% and 19.19% respectively.

The top 5 traded instruments were the September 23 3YR, February 23 5YR, April 32 3YR, March 32 15YR and October 22 2YR in that order as indicated in the table above. In all, the top 5 traded instruments accounted for 65.41% of the total volume of trades.

## FOREX MARKET

FOREX MARKET				
BANK OF GHANA RATES	PREVIOUS	CURRENT	%CHNG	YTD
GHS:€	5.7294	5.7299	0.009%	-0.58%
GHS:£	6.8397	6.8368	-0.04%	-3.26%
GHS:¥	7.9621	7.9553	-0.09%	0.97%

BANK RATES				
	PREVIOUS	CURRENT	%CHNG	YTD
GHS:€	6.7801	6.7800	-0.002%	-1.92%
GHS:£	6.8443	6.8394	-0.072%	-3.49%
GHS:¥	7.9732	7.9612	-0.125%	0.84%

FOREX BUREAU RATES				
	PREVIOUS	CURRENT	%CHNG	YTD
GHS:€	6.7802	6.7822	-0.099%	-2.82%
GHS:£	6.8463	6.8416	-0.071%	-4.43%
GHS:¥	7.9992	7.9768	-0.28%	-1.11%

Forex rates from the Bank of Ghana shows that the cedi appreciated against the euro and the pound sterling by 0.04% and 0.09% respectively. The cedi however depreciated against the dollar by 0.009% for today.

Banks decreased their forex rates with regards to the dollar, the euro and the pound sterling by 0.002%, 0.072% and 0.125% respectively for today.

The forex market decreased its forex rates with regards to the dollar, the euro and the pound sterling by 0.09%, 0.071% and 0.28% respectively for today.

## INTERNATIONAL COMMODITIES MARKET

INTERNATIONAL COMMODITIES MARKET				
	PREVIOUS	CURRENT	%CHNG	YTD
GOLD	1,730.04	1,729.26	-0.05%	-3.47%
COCOA	2,526.00	2,533.00	0.28%	-2.28%
OIL (BRENT)	68.48	68.06	-0.61%	32.96%

Commodity prices displayed varying results on the international market today as Cocoa price increased by 0.28%. Gold and Oil prices however decreased by 0.05% and 0.61% respectively.

# ARE YOU LOOKING FOR T-BILLS AND BONDS TO BUY?

CONTACT YOUR PROFESSIONAL TRADERS AT CDH SECURITIES LTD  
FOR ALL YOUR T- BILLS AD BONDS TRANSACTIONS

**IT'S SAFE SECURED EASY QUICK TRANSPARENT!**

## MACRO-ECONOMIC DATA

MACRO-ECONOMIC DATA			
ITEM	UNIT	FIGURE	AS@
GDP GROWTH RATE	PERCENT	6.47	Dec-19
INFLATION	PERCENT	10.30	Feb-21
POLICY RATE	PERCENT	14.50	Jan-21
INTERNATIONAL RESERVES	USD MILLION	8627.4	Oct-20
TOTAL EXPORT	USD MILLION	12001.3	Oct-20
TOTAL IMPORT	USD MILLION	10257.9	Oct-20
IMPORT COVER	MONTH	4.1	Oct-20

MACRO ECONOMIC DATA RELEASE CALENDAR 2020				
MONTH	GOG BOND, BILLS & NOTES ISSUANCE (GHS MILLIONS)	PPI PRESS RELEASE	CPI PRESS RELEASE	QUARTERLY GDP PRESS RELEASE
JANUARY	4,950.00	22-Jan-20		8-Jan-20
FEBRUARY	6,900.00	19-Feb-20		12-Feb-20
MARCH	2,110.81	18-Mar-20		11-Mar-20
APRIL	5,520.00	22-Apr-20		15-Apr-20
MAY	5,100.00	19-May-20		13-May-20
JUNE	7,337.87	17-Jun-20		11-Jun-20

TRADING BALANCE	USD MILLION	1,747.9	09p-20
TOTAL PUBLIC DEBT	USD BILLION	48.0	Sep-20
TOTAL DEBT GDP RATIO	PERCENT	71.0	Sep-20
EXTERNAL DEBT	USD BILLION	24.3	Sep-20
EXTERNAL DEBT GDP RATIO	PERCENT	35.9	Sep-20
DOMESTIC DEBT	GHC BILLION	135.3	Sep-20
DOMESTIC DEBT GDP RATIO	PERCENT	35.1	Sep-20
S&P RATING	CREDIT WORTHINESS	B-	Sep-20
FITCH RATING	CREDIT WORTHINESS	B	Oct-20
MOODY'S RATING	CREDIT WORTHINESS	B3	Apr-20

AUGUST	10-Jul-20	12-Aug-20
--------	-----------	-----------

SOURCES: CDH SECURITIES LTD, CENTRAL SECURITIES DEPOSITORY, GHANA STOCK EXCHANGE, BANK OF GHANA, GOLD STEET BUSINESS, BLOOMBERG, FIDELITY BANK, SOCIETE GENERALE (GH), MINISTRY OF FINANCE, AND GHANA STATISTICAL SERVICE.

DISCLAIMER: In the preparation of the opinions, forecast, and provision of information contained in this report, CDH Securities Limited does not make any representation or give any warranties as to the correctness, completeness or accuracy nor does the company assume liability for any losses arising from errors or omissions in the opinion, forecast or information irrespective of whether there has been any negligence by the brokerage firm, its affiliates or any officers or employees of the firm whether such losses be direct, indirect or consequential. This does not constitute an advice and anyone in need of investment advice should, therefore, contact the broker personally.

CDH Securities Ltd. P.O.BOX 14911, Accra-Ghana, West Africa. CONTACTS: amoakoatta@cdhgroup.co | cdhsecurities@cdhgroup.co. +233 244 974 256, +233 302 671050.

ANALYSTS: James Afful  
Charles Amoako-Atta Jnr  
Esther Asamoah

Licensed Dealing Member of The Ghana Stock Exchange. Member of the CDH Group, Accra-Ghana, West Africa. ©2020 CDH SECURITIES LTD. All rights reserved.

We sent out this message to all existing Company Name customers.

If you no longer wish to receive these emails, simply click on the following link [Unsubscribe](#).

©2020 CDH SECURITIES LTD. All rights reserved.