

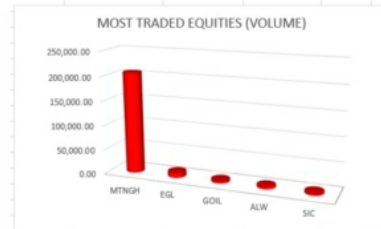


**DAILY INTERMARKETS SNAPSHOT**

10-05-2021

**STOCK MARKET SUMMARY**

GHANA DAILY INTERMARKETS SNAPSHOT				
VOLUME	QTY	11,717,330.00	235,091.00	-97.994%
VALUE	GHC	14,555,288.18	301,292.37	-97.930%
GSE-CI INDEX	POINT	2,695.76	2,695.73	-0.0009%
GSE-FS INDEX	POINT	1,890.89	1,890.85	-0.0021%
MARKET CAP.	GHC	62,207.37	62,207.13	-0.0004%
YTD	PERCENT	38.84%	38.84%	0.0000%
<b>PRICE CHANGES</b>				
EGL	GHC	1.49	1.50	0.67%
SIC	GHC	0.08	0.07	-12.50%



Today's trading session ended with a 0.03 point decrease in the Ghana Stock Exchange's Composite Index (GSE-CI). The market capitalization also decreased by GH¢0.24 to GH¢ 62,207.13. The year-to-date return is recorded at 38.84%

A total volume of 235,091 shares valued at GH¢301,292.37 exchanged hands on the bourse. The most traded equity for today was MTNGH whose trade accounted for 87.74% of the total shares traded and 84.89% of the total value of shares traded.

There were two price changes as the market recorded one loser and one gainer for today. SIC was the day's biggest loser as the stock price declined by 12.50% to close the market at GHS 12.50 per share.

GSE LISTED COMPANIES TRADING STATISTICS AS AT 10TH MAY 2021											
EQUITY	MARKET CAP(GHS millions)	CLOSING PRICE(GHS)	YTD RETURNS (%)	DIV YIELD(%)	ROE(%)	P/E(x)	P/B(x)	FIGURE \$ BASED	GSE YEAR	GSE RETURN	
ACCESS	747.97	4.39	(2.05)	0.0000	23.60	3.01	0.71	FY'20	1999	8.60	
ADB	1,169.47	9.04	-	0.0000	7.69	17.87	1.37	FY'20	1991	-7.95	
AGA	15,159.30	37.69	-	0.3311	NA	NA	NA	0	1992	-2.63	
ALW	23.67	0.16	(3.03)	0.0000	(15.63)	(0.68)	0.11	Q3'20	1992	102.74	
ARTTN	86.00	0.49	400.00	0.0000	(64.92)	(17.84)	1.58	FY'20	1994	624.34	
BOPF	63.60	3.88	-	1.7000	23.50	2.37	0.70	FY'20	1995	4.33	
CAL	526.33	0.84	(5.62)	5.7143	18.61	2.54	0.47	FY'20	1996	13.82	
CLTD	1.02	0.03	-	0.0000	0.24	0.03	0.00	Q2'20	1997	41.85	
CMIT	0.15	0.11	22.22	8.3091	3.64	3.19	0.31	FY'20	1999	69.69	
CPC	61.14	0.83	50.00	0.0000	6.15	(23.05)	(1.73)	FY'20	1999	-19.22	
EGH	2,257.86	7.89	(2.78)	0.0000	3.33	3.35	0.16	Q3'20	2000	16.55	
EGL	232.83	1.59	7.14	3.0000	4.19	12.81	0.54	FY'20	2001	11.42	
ETI	1,654.74	0.07	(12.50)	0.0000	4.56	3.20	0.15	FY'20	2002	45.96	
FML	146.42	1.24	16.67	0.0000	0.23	244.44	0.56	FY'20	2003	194.67	
GCB	1,311.15	4.99	22.22	6.0606	21.45	2.39	0.64	FY'20	2004	91.33	
GGBL	336.80	1.29	43.33	2.2039	8.26	14.51	1.20	FY'20	2005	-28.15	
GOIL	587.79	1.59	-	2.8000	13.26	3.76	1.23	FY'20	2006	4.97	
GSR	493.43	9.59	-	0.0000	(316.61)	(26.39)	#####	FY'20	2007	31.04	
MAC	53.43	5.91	-	0.0000	3.38	10.68	0.43	Q3'20	2008	59.04	
MLC	4.51	0.99	-	0.0000	(45.34)	(0.76)	0.34	Q2'20	2009	-46.59	
MTNGH	15,240.19	1.24	93.75	4.0323	45.39	10.33	4.36	FY'20	2010	32.25	
PBC	14.40	0.83	-	0.0000	(2.18)	2.67	(0.06)	FY'20	2011	-3.19	
PZC	63.84	0.31	-	0.0000	(0.91)	(35.71)	0.87	Q2'19	2012	23.81	
RBGH	304.83	0.45	3.76	0.0000	8.49	5.30	0.50	FY'20	2013	78.81	
SCB	2,452.60	10.20	11.53	5.7143	32.61	5.13	1.67	FY'20	2014	8.40	
SIC	13.70	0.07	(12.50)	0.0000	2.13	2.36	0.05	FY'20	2015	-11.77	
SPL	5.20	0.02	-	0.0000	8.40	4.13	0.35	Q3'19	2016	-15.32	
SDGEGH	420.48	0.84	31.25	5.1190	2.75	3.00	0.08	Q3'20	2017	52.72	
SvL	1.03	0.05	-	0.0000	139.28	(0.86)	(1.20)	FY'19	2018	-6.29	
TBL	68.00	0.34	0.0000	NA	0.48	NA	0	2019	2019	-6.90	
TOTAL	363.53	3.35	14.84	2.2631	13.33	3.20	0.45	FY'20	2020	N/A	
TLV	10,262.96	7.47	(37.33)	0.0000	NA	NA	NA	0	2021	N/A	
UNIL	225.00	3.49	(74.35)	22.2222	(4.81)	(11.65)	0.56	Q3'20	2022	N/A	

SOURCE: GSE, CDH SECURITIES LTD AND CDH RESEARCH

P/E : PRICE-TO-EARNINGS RATIO      DIV YIELD : DIVIDEND YIELD  
 P/B : PRICE-TO-BOOK RATIO      RETURN ON EQUITY      YTD : YEAR-TO-DATE

**DIVIDEND ANNOUNCEMENTS**

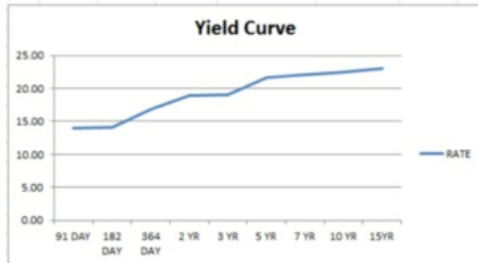
COMPANY	SYMBOL	YEAR	DIVIDEND/SHARE (GH¢)	EX DIVIDEND DATE	PAYMENT DATE
GCB BANK	GCB	2020	0.250	19-May-21	18-Jun-21

**FIXED INCOME MARKET SUMMARY**

GHANA FIXED INCOME DAILY MARKET SNAPSHOT AS AT 07-05-2021			
VOLUME OF TRADES(GHS)			
ITEMS	PREVIOUS	CURRENT	% CHNG
BILLS	35,643,160.98	118,882,616.78	233.54%
NOTES	88,761,570.08	32,450,930.17	-63.44%
BONDS	649,905,746.87	696,907,895.69	7.23%
<b>TOTAL</b>	<b>774,310,477.93</b>	<b>848,241,442.64</b>	<b>9.55%</b>
TOP FIVE(S) TRADED SECURITIES			
No.	SECURITY ID	VOLUME (%)	PRICE (%)
1	24/01/22 5YR BOND	21.45%	101.55
2	08/07/24 3YR BOND	15.82%	104.46
3	15/03/32 15YR BOND	12.20%	99.98
4	01/07/21 182 DAY COCOA BILL	11.66%	97.64
5	28/09/23 3YR BOND	6.14%	102.30

COMPARABLE RATES		
INSTRUMENT	CURRENT RATE	RETURNS
91 DAY BILL	12.7898%	12.7898%
182 DAY BILL	13.5707%	13.5707%
364 DAY BILL	16.5257%	16.5257%
FIXED DEPOSIT 91-DAY RATE	11.2500%	11.2500%
FIXED DEPOSIT 182-DAY RATE	12.7500%	12.7500%
FIXED DEPOSIT 364-DAY RATE	14.7500%	14.7500%

## Comments



Trading as at 7th May 2021 saw the market experienced an increased in turnover by 9.55% as it recorded over GHS848 million worth of bonds, notes and bills traded. The long term dated instruments dominated the trading activities as compared to the short and the medium term securities as trades in bonds accounted for 82.16% of total trades while that of bills and notes were 14.02% and 3.83% respectively.

The top 5 traded instruments were the January 22 5YR, July 24 3YR, March 32 15YR, July 21 182 DAY and September 23 3YR in that order as indicated in the table above. In all, the top 5 traded instruments accounted for 67.27% of the total volume of trades.

## FOREX MARKET

FOREX MARKET				
BANK OF GHANA RATES	PREVIOUS	CURRENT	%CHNG	YTD
GHS/\$	5.7347	5.7345	-0.003%	-0.50%
GHS/€	6.9131	6.9663	0.770%	-1.43%
GHS/£	7.9597	8.0231	0.80%	1.83%
BANK RATES				
GHS/\$	5.8280	5.8280	0.000%	-0.38%
GHS/€	7.0050	7.0300	0.357%	-0.80%
GHS/£	8.0990	8.1070	0.099%	1.57%

Forex rates from the Bank of Ghana shows that the cedi depreciated against the euro and the pound sterling by 0.770% and 0.80% respectively. The cedi however appreciated against the dollar by 0.003% for today.

Banks increased their forex rate with regards to the euro and the pound sterling by 0.35% and 0.09% respectively. The rate for the dollar was however kept unchanged for today.

## INTERNATIONAL COMMODITIES MARKET

INTERNATIONAL COMMODITIES MARKET				
	PREVIOUS	CURRENT	%CHNG	YTD
GOLD	1,814.89	1,835.52	1.14%	-2.85%
COCOA	2,408.00	2,457.00	2.03%	-5.21%
OIL (BRENT)	68.63	68.30	-0.48%	33.42%

Commodity prices displayed varying results on the international market today as oil price decreased by 0.48%. Gold and cocoa prices however increased by 1.14% and 2.03% respectively.

**ARE YOU LOOKING FOR  
T-BILLS AND BONDS TO BUY?  
CONTACT YOUR PROFESSIONAL TRADERS AT CDH SECURITIES LTD  
FOR ALL YOUR T- BILLS AD BONDS TRANSACTIONS  
**IT'S SAFE SECURED EASY QUICK TRANSPARENT!****

## MACRO-ECONOMIC DATA

MACRO-ECONOMIC DATA			
ITEM	UNIT	FIGURE	AS AT
GDP GROWTH RATE	PERCENT	0.4	Dec-20
INFLATION	PERCENT	10.30	Mar-21
POLICY RATE	PERCENT	14.50	Mar-21
INTERNATIONAL RESERVES	USD MILLION	3719.7	Feb-21
TOTAL EXPORT	USD MILLION	2542.6	Feb-21
TOTAL IMPORT	USD MILLION	2202.9	Feb-21
IMPORT COVER	MONTH	4.2	Feb-21
TRADE BALANCE	USD MILLION	339.7	Feb-21
TOTAL PUBLIC DEBT	USD BILLION	50.8	Dec-20
TOTAL DEBT GDP RATIO	PERCENT	76.1	Dec-20
EXTERNAL DEBT	USD BILLION	24.7	Dec-20
EXTERNAL DEBT GDP RATIO	PERCENT	37.0	Dec-20
DOMESTIC DEBT	GHC BILLION	149.8	Dec-20
DOMESTIC DEBT GDP RATIO	PERCENT	39.1	Dec-20
S&P RATING	CREDIT WORTHINESS	B-	Sep-20
FITCH RATING	CREDIT WORTHINESS	B	Oct-20
MOODY'S RATING	CREDIT WORTHINESS	B3	Feb-21

MACRO ECONOMIC DATA RELEASE CALENDAR 2021				
MONTH	GOG BOND, BILLS & NOTES ISSUANCE (GHS MILLIONS)	PPI PRESS RELEASE	CPI PRESS RELEASE	QUARTERLY GDP PRESS RELEASE
JANUARY		17-Jan-21	10-Jan-21	
FEBRUARY		11-Feb-21	10-Feb-21	

SOURCES: CDH SECURITIES LTD, CENTRAL SECURITIES DEPOSITORY, GHANA STOCK EXCHANGE, BANK OF GHANA, GOLD STEET BUSINESS, BLOOMBERG, FIDELITY BANK, SOCIETE GENERALE (GH), MINISTRY OF FINANCE, AND GHANA STATISTICAL SERVICE.

DISCLAIMER: In the preparation of the opinions, forecast, and provision of information contained in this report, CDH Securities Limited does not make any representation or give any warranties as to the correctness, completeness or accuracy nor does the company assume liability for any losses arising from errors or omissions in the opinion, forecast or information irrespective of whether there has been any negligence by the brokerage firm, its affiliates or any officers or employees of the firm whether such losses be direct, indirect or consequential. This does not constitute an advice and anyone in need of investment advice should, therefore, contact the broker personally.

CDH Securities Ltd. P.O.BOX 14911, Accra-Ghana, West Africa. CONTACTS: amoakoatta@cdhgroup.co | cdhsecurities@cdhgroup.co. +233 244 974 256, +233 302 671050.

ANALYSTS: James Afful  
Charles Amoako-Atta Jnr  
Esther Asamoah

Licensed Dealing Member of The Ghana Stock Exchange. Member of the CDH Group, Accra-Ghana, West Africa. ©2020 CDH SECURITIES LTD. All rights reserved.

We sent out this message to all existing Company Name customers.

If you no longer wish to receive these emails, simply click on the following link [Unsubscribe](#).

©2020 CDH SECURITIES LTD. All rights reserved.